

# LOCKER COLLECTION

---



# LOCKER COLLECTION BY ATHLON

A selection of solid HPL double sided decorative panels.  
Suitable for areas that have a huge level of humidity. Ideal for applications that need high hygiene and maintenance standards.  
A "made in Italy" product designed to inspire creativity.

## COLORSINTESI

Code	Name	RAL	Pantone	NCS	Finish	4200x1600 Compact 10 mm
0001	Bianco*	9016	-	S 0500-N	R	•
0211	Grigio Perla*	7035	428 U	S 2502-B	R	•
0509	Nero*	9004	Black	S 9000-N	R	•
0561	Rosso Devil*	3020	186 U	S 1080-Y90R	R	•
0594	Fucsia*	4006	7748 U	S 2060-R30B	R	•
0605	Glicine*	-	2099 U	S 2020-R50B	R	•
0607	Lavanda*	-	645 U	S 2030-R90	R	•
0623	Grigio Ferro*	-	2336 U	S 7502-G	R	•
0644	Turchese Pastello*	-	-	-	R	•
0660	Verde Acido*	-	375 U	S 0560-G30Y	R	•
0670	Giallo Altamira*	-	603 U	S 0570-G90Y	R	•
0711	Blu Baia*	-	-	-	R	•

## WOODS

Code	Name	Finish	4200x1600 Compact 10 mm
4511	Rovere Fumo*	R	•
4532	Segato Naturale*	ALV	•
4533	Segato Tinto*	ALV	•
4602	Eucalipto California*	ALV	•
4603	Eucalipto Birmania*	ALV	•
T202	W74-01 Oak*	R	•

\* Available for both Cubicle and Locker Collections

## HPL PROPERTIES

The most important quality characteristics of decorative High Pressure Laminates according to EN 438.

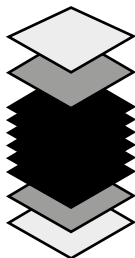
≈ 70% Paper  
≈ 30% Thermosetting Resins

Overlay (only for printed decors)

Decorative Paper

Core

Decorative Paper



Impact resistant



Scratch, wear and tear resistant



Low reflectivity to light



Easy to clean



Heat resistant



Hygienic



Suitable for contact with food

### Over 60 years of research and technology

Since 1954 Arpa Industriale has been designing and manufacturing panels with high quality HPL technology for all interior fitting applications. Arpa HPL are produced at the 150,000 sqm plant in Bra, Piedmont. Over 60 years of investments in research, advanced technology, and personnel training have allowed Arpa to win over international markets and gain its consolidated reputation as a highly reliable player in the industry that stands out for the expertise of its personnel, excellence and variety of its offering, flexibility, and rapid service. Arpa is well aware of its social responsibility towards its stakeholders, but also society and the environment. This is why, in 2008, it adopted a Code of Ethics that regulates its shared practices and focuses on values, such as integrity, transparency, and sustainability. Arpa is ISO 9001 and OHSAS 18001 certified. Arpa products won several prestigious international awards just like "Interzum Best of the Best."

# COLORSINTESI



\* Available for both Cubicle and Locker Collections

# WOODS

---



4303 LRV 18



4390 LRV 20



4456 LRV 4



4511\* LRV 22



4519 LRV 64



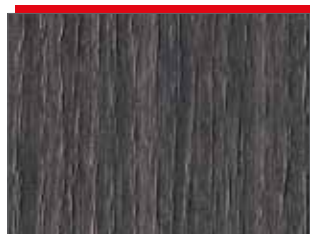
4520 LRV 37



4532\* LRV 37



4533\* LRV 22




4602\* LRV 8



4603\* LRV 25



T202\* LRV 35

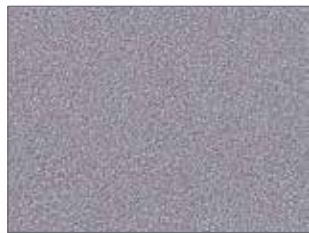
 \* Available for both Cubicle and Locker Collections

# MATERIC EXPRESSIONS

---



0997 LRV 4



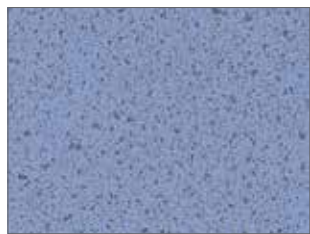
1017 LRV 27



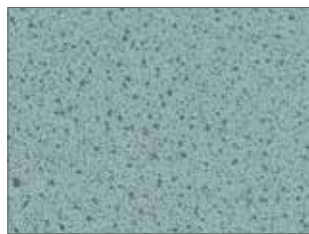
3194 LRV 63



3283 LRV 35



9131 LRV 25



9133 LRV 30



9136 LRV 38



9137 LRV 62

# CUBICLE COLLECTION BY ATHLON

A selection of solid HPL double sided decorative panels.  
Suitable for cubicles, washroom, vanity units, wall panelling and other interior applications that have a high level of humidity.  
A "made in Italy" product designed to inspire creativity.

## COLORSINTESI

Code	Name	RAL	Pantone	NCS	Finish	4300x1850	4200x1600	2150x1850	4200x1600	3050x1300
						Compact 12.7 mm			Thin HPL 0,8 mm	
0001	Bianco*	9016	-	S 0500-N	R	•	-	•	•	•
0211	Grigio Perla*	7035	428 U	S 2502-B	R	•	-	•	•	•
0218	Beige	1015	4685 U	S 1010-Y30R	R	•	-	•	•	•
0234	Grafite	7004	429 U	S 4502-B	R	•	-	•	•	•
0509	Nero*	9004	Black	S 9000-N	R	•	-	•	•	•
0517	Verde Malva	6019	7485 U	S 1020-G40Y	R	•	-	•	•	•
0527	Grigio Argento	7047	427 U	S 1500-N	R	•	-	•	•	•
0561	Rosso Devil*	3020	186 U	S 1080-Y90R	R	•	-	•	•	•
0593	Blu Faenza	5010	287 U	S 4050-R80B	R	•	-	•	•	•
0594	Fucsia*	4006	7748 U	S 2060-R30B	R	•	-	•	•	•
0605	Glicine*	-	2099 U	S 2020-R50B	R	•	-	•	•	•
0607	Lavanda*	-	645 U	S 2030-R90	R	•	-	•	•	•
0623	Grigio Ferro*	-	2336 U	S 7502-G	R	•	-	•	•	•
0644	Turchese Pastello*	-	-	-	R	•	-	•	•	•
0660	Verde Acido*	-	375 U	S 0560-G30Y	R	•	-	•	•	•
0670	Giallo Altamira*	-	603 U	S 0570-G90Y	R	•	-	•	•	•
0682	Arancio	-	150 U	S 0570-Y40R	R	•	-	•	•	•
0711	Blu Baia*	-	-	-	R	•	-	•	•	•

## WOODS

Code	Name	Finish	4300x1850	4200x1600	2150x1850	4200x1600	3050x1300
			Compact 12.7 mm			Thin HPL 0,8 mm	
4303	Canaletto	R	•	-	•	•	•
4390	Zebrano Naturale	R	•	-	•	•	•
4456	Rovere Zadar	R	•	-	•	•	•
4511	Rovere Fumo*	R	•	-	•	•	•
4519	Rovere Asburgo	R	•	-	•	•	•
4520	Rovere Asburgo Nat.	R	•	-	•	•	•
4532	Segato Naturale*	ALV	-	•	-	•	•
4533	Segato Tinto*	ALV	-	•	-	•	•
4602	Eucalipto California*	ALV	-	•	-	•	•
4603	Eucalipto Birmania*	ALV	-	•	-	•	•
T202	W74-01 Oak*	R	•	-	•	•	•

## MATERIC EXPRESSIONS

Code	Name	Finishes	4300x1850	4200x1600	2150x1850	4200x1600	3050x1300
			Compact 12.7 mm			Thin HPL 0,8 mm	
0997	Selenio Nero	R	•	-	•	•	•
1017	Selenio Silver	R	•	-	•	•	•
3194	Corlam Bianco	R	•	-	•	•	•
3283	Abstract Aluminium	R	•	-	•	•	•
9131	Spot Lavanda	R	•	-	•	•	•
9133	Spot Turchese Pastello	R	•	-	•	•	•
9136	Spot Grigio Perla	R	•	-	•	•	•
9137	Spot Bianco	R	•	-	•	•	•

\* Available for both Cubicle and Locker Collections



Arpa Industriale is a single member company under the direction and coordination of Broadview Industries B.V.

### Disclaimer

The disclaimer that follows is a summary of the applicable full disclaimer (which can be found on arpaindustriale.com). The information provided by Arpa Industriale S.p.A. ("Arpa") in this document is solely indicative. Arpa is unable to warrant the accuracy and completeness of this information. No rights can be derived from the information provided; the use of the information is at the other party's risk and responsibility. This document does not guarantee any properties of Arpa's products. Arpa does not warrant that the information in this document is suitable for the purpose for which it is consulted by the other party. The document does not contain any design, structural calculation, estimate or other warranty or representation that customers and third parties may rely on. Colours included in Arpa's communications (including but not limited to printed matter) and in samples of Arpa's products may differ from the colours of the Arpa's products to be supplied. Arpa's products and samples are produced within the specified colour tolerances and the colours (of production batches) may differ, even if the same colour is used. The viewing angle also influences the colour perception.

Customers and third parties must have a professional adviser inform them about (the suitability of) Arpa's products for all desired applications and about applicable laws and regulations. Arpa reserves the right to change (the specifications for) its products without prior notice. To the maximum extent permitted under applicable law, Arpa is not liable (neither contractual nor non-contractual) for any damage arising from or related to the use of this document, except if and to the extent that such damage is the result of wilful misconduct or gross negligence on the part of Arpa and/or its management. All oral and written statements, offers, quotations, sales, supplies, deliveries and/or agreements and all related activities of Arpa are governed by the General Terms and Conditions of Arpa Industriale S.p.A. All oral and written statements, offers, quotations, sales, supplies, deliveries and/or agreements and all related work of Arpa USA Inc. ("Arpa USA") are governed by the Arpa USA General Terms and Conditions of Sale. All intellectual property rights and other rights regarding the content of this document (including logos, text and photographs) are owned by Arpa and/or its licensors.

# CUBICLE COLLECTION

---

