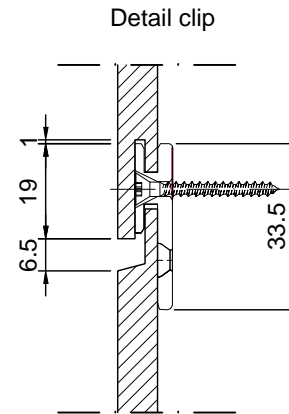
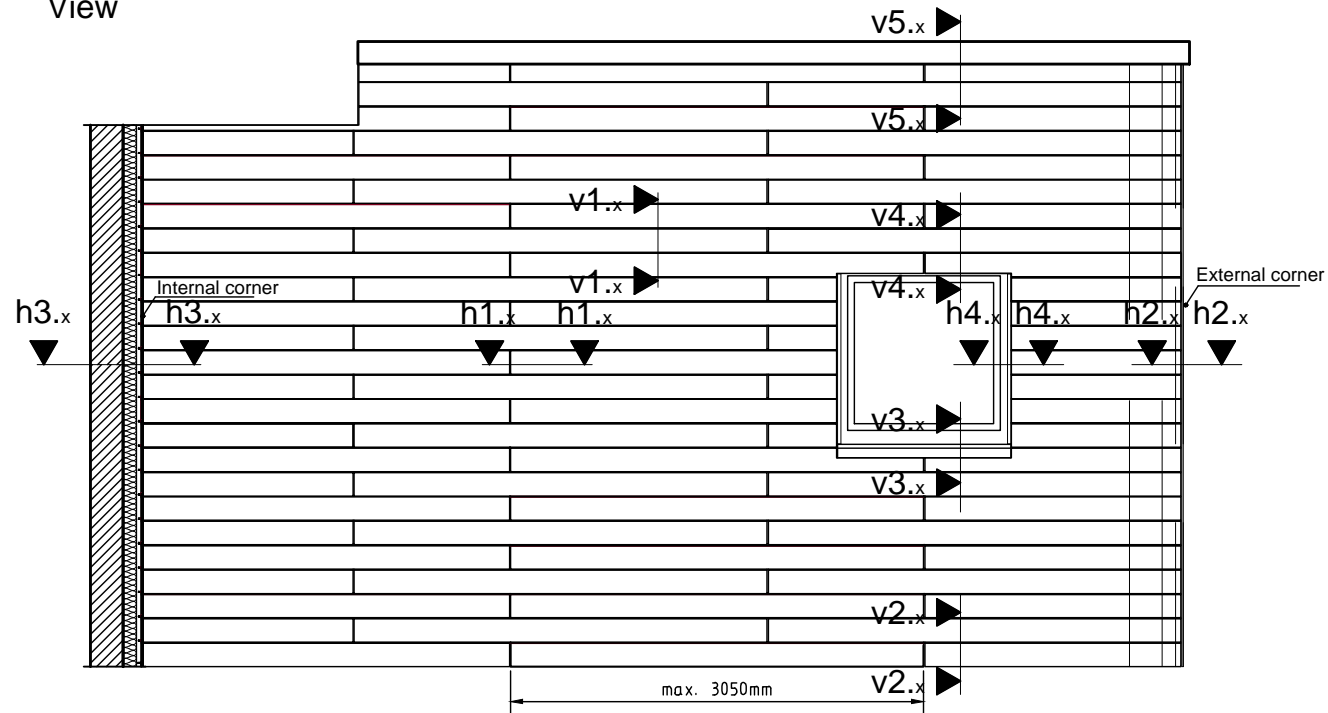
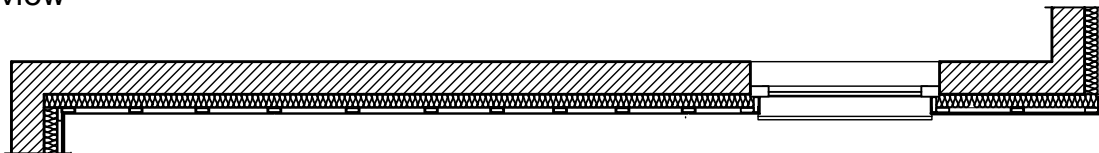


Maximum panel size and maximum fixing distance for façade cladding with Trespa® PURA NFC® please refer to the installation guidelines.

View



Top view



			Building/ Department	Alg.		TRESPA®		Remarks		
			Revision	Drawn	Jan de Jonge	Passingen	A3	PURA FS 02	10	
			Date	JAN 2016		I.S.O.	Size	Number	Revision	Sheet
			Date				Scale	Name		
							1:1	Façade cladding with Trespa® PURA FLUSH Siding Overview 3D		