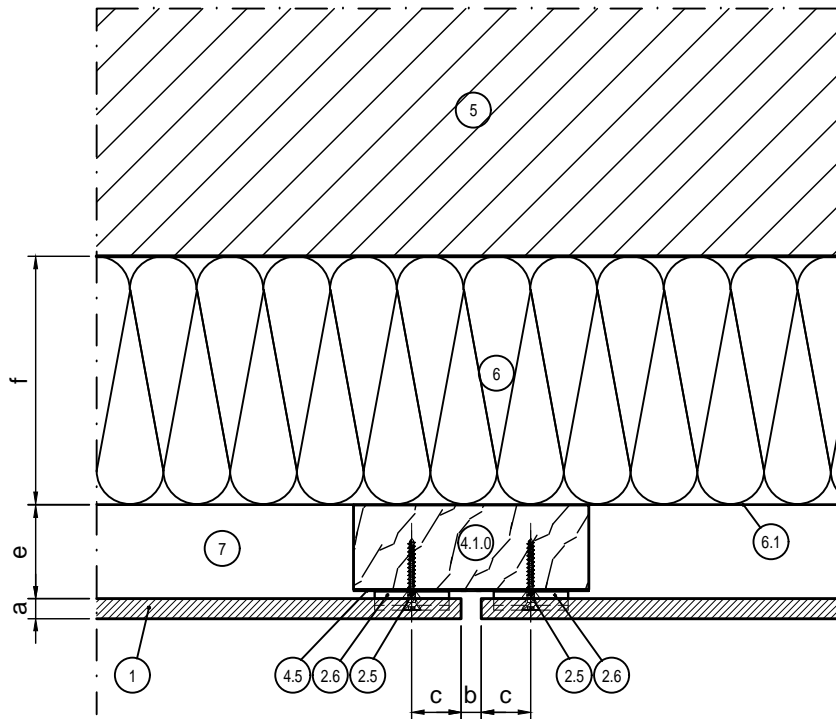
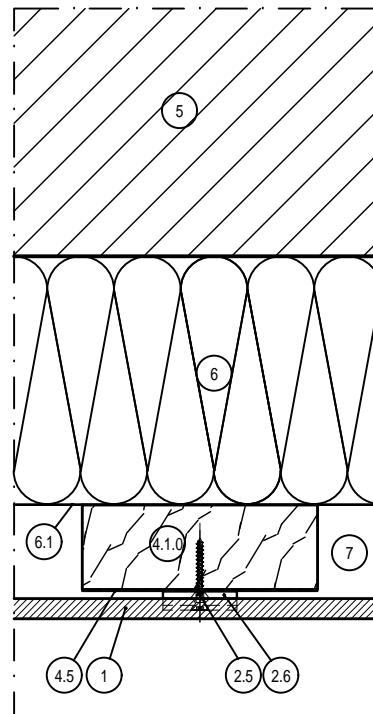


Horizontal section h1.1

Detail fixing points at vertical joints



Detail fixing points at continuous panels



LEGEND:	
1	Trespa® PURA NFC® panel
2.5	Counter sunk screw (WÜRTH 3.5 30/25, AW 20)
2.6	Universal clip
4.1.0	Vertical timber batten (min. 95 - 110 x 34 mm)
4.5	EPDM gasket
5	Wall
6	Insulation
6.1	(UV resistant) breather membrane (optional)
7	Ventilated cavity

GENERAL INFORMATION:	
a	Panel thickness 8 mm
b	Joint width 8 mm. Based on applicable building standards, regulations or certificates, wider joints may be permissible
c	Edge clearance min. 20 mm, max. 10 x panel thickness
e	Ventilation min. 20 mm. Recommended max. cavity depth (between rainscreen cladding and insulation): 50 mm. Ventilation inlets and outlets min. 50 cm ² /m
f	Insulation (thickness)

Building/Department		Alg.		TRESPA®		Remarks	
Revision		Drawn Jan de Jonge		Passingen I.S.O.		A3 PURA FS h1.1 0	
Date		Date JAN 2016		Size		Number	
Scale		1:2		Name		Façade cladding with Trespa® PURA FLUSH Siding	
Date						Detail h1.1 – Joint vertical	
						Revision	
						Sheet	