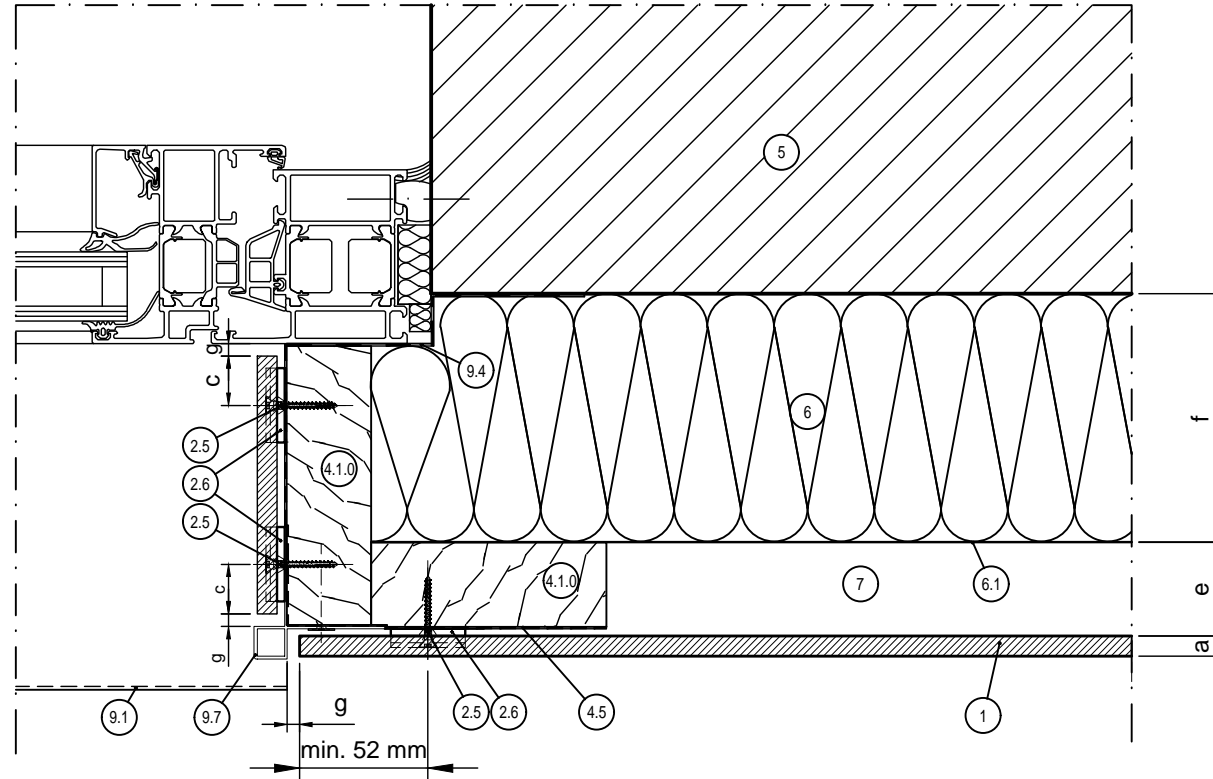


# Horizontal section h4.1



LEGEND:	
1	Trespa® PURA NFC® panel
2.5	Counter sunk screw (WÜRTH 3.5 30/25, AW 20)
2.6	Universal clip
4.1.0	Vertical timber batten (min. 95 - 110 x 34 mm)
4.5	EPDM gasket
5	Wall
6	Insulation
6.1	(UV resistant) breather membrane (optional)
7	Ventilated cavity
9.1	Window sill
9.4	Wind seal
9.7	Outer-corner profile (PROFACE® CORNEX C128-A)

GENERAL INFORMATION:	
a	Panel thickness 8 mm
c	Edge clearance min. 20 mm, max. 10 x panel thickness
e	Ventilation min. 20 mm. Recommended max. cavity depth (between rainscreen cladding and insulation): 50 mm. Ventilation inlets and outlets min. 50 cm²/m
f	Insulation (thickness)
g	Distance min. 5 mm

Building/ Department	Alg.		TRESPA®		Remarks		
Revision	A3		PURA FS h4.1		10		
Drawn	Jan de Jonge	Passingen					
Date	JAN 2016	I.S.O.	Size	Number	Revision	Sheet	
Scale	1:2	Name		Façade cladding with Trespa® PURA FLUSH Siding Detail h4.1 – Window embrasure			
Date							