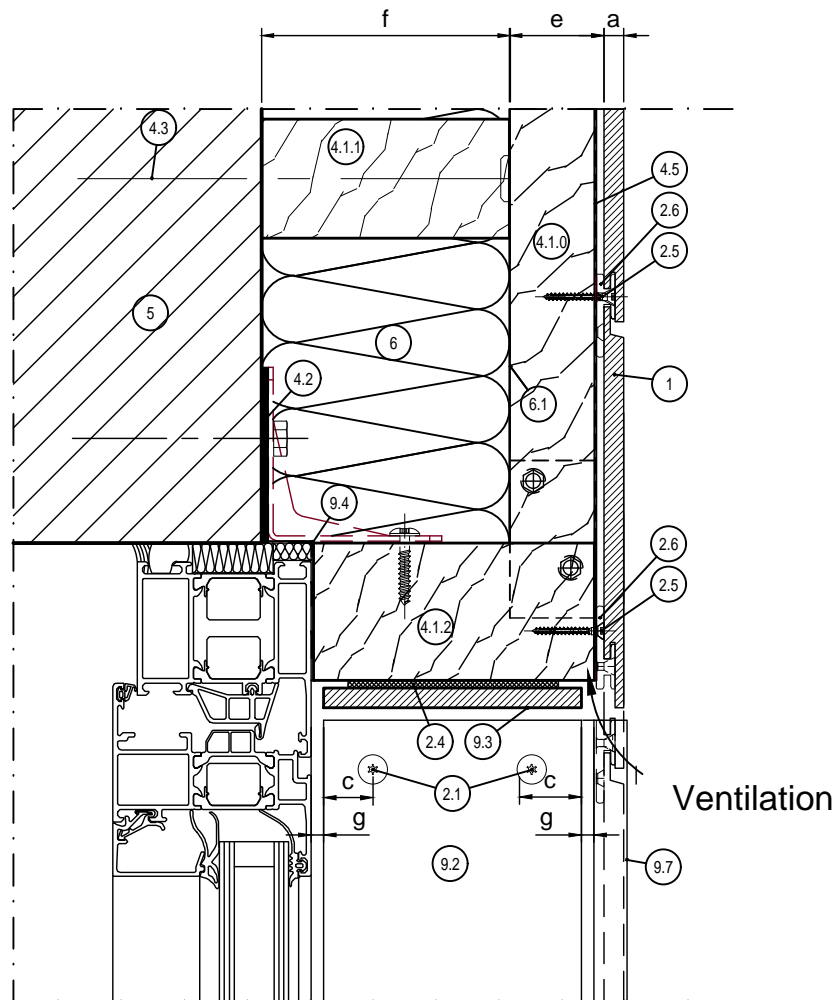


# Vertical section v4.1b



Ventilation

LEGEND:	
1	Trespa® PURA NFC® panel
2.1	Fast fix screw (SFS Intec RVS A2 4.8 x 38 mm)
2.4	Adhesive system according to the guidelines of Adhesive manufacturer
2.5	Counter sunk screw (WÜRTH 3.5 30/25, AW 20)
2.6	Universal clip
4.1.0	Vertical timber batten (min. 95 - 110 x 34 mm)
4.1.1	Horizontal counter batten
4.1.2	Partial wooden substructure
4.2	Thermal isolator
4.3	Wall anchor
4.5	EPDM gasket
5	Wall
6	Insulation
6.1	(UV resistant) breather membrane (optional)
9.2	Window reveal with TRESPA®
9.3	Window head with TRESPA®
9.4	Wind seal
9.7	Outer corner profile (PROFACE® CORNEX C128-A)

GENERAL INFORMATION:	
a	Panel thickness 8 mm
c	Edge clearance min. 20 mm, max. 10 x panel thickness
e	Ventilation min. 20 mm. Recommended max. cavity depth (between rainscreen cladding and insulation): 50 mm. Ventilation inlets and outlets min. 50 cm <sup>2</sup> /m
f	Insulation (thickness)
g	Distance min. 5 mm

		Building/ Department	TRESPA®		Remarks	
		Alg.			A3	PURA FS v4.1b   0
	Revision	Drawn Jan de Jonge	Passingen			
		Date JAN 2016	I.S.O.		Size	Number
	Date	Scale	1:2	⊕	Name Façade cladding with Trespa® PURA FLUSH Siding Detail v4.1b – Window head	
					Revision	Sheet