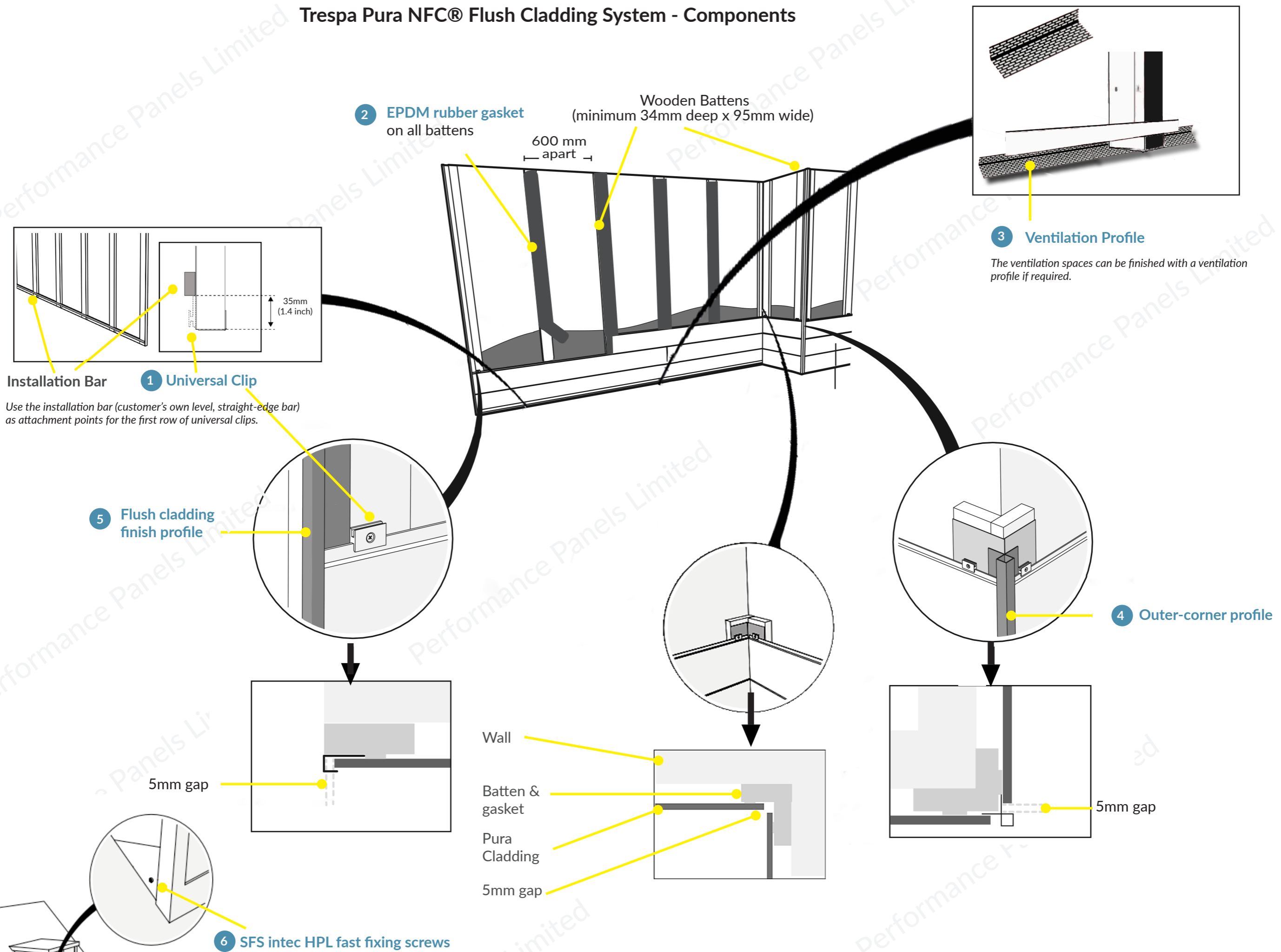


Trespa Pura NFC® Flush Cladding System - Components



1. Universal clips with screws - Universal clips are essential to fit the Pura cladding system, as they provide the correct placement of the planks.

2. EPDM rubber gasket - To cover each of the wooden battens.

3. Ventilation Profile - At the bottom and top of the cladding, as well as at each interruption in the façade (e.g. window frames), ventilation spaces should be made, of at least 50cm²/m¹. The ventilation spaces can be finished, if required, with a ventilation profile.

4. Proface® outer-corner profile and **5. Proface® finish profile** - These profiles are designed to provide aesthetically pleasing finishing options for your installation. They can be placed wherever your façade drawing suggests they will enhance your projects, such as around doors and windows.

6. SFS intec HPL fast fixing screws - Suitable for areas where space is compromised and universal clips cannot be used, such as dormer windows and when the top of the cladding finishes close to the roof.